

SIS 797 ENCLOSURE



THE COST-EFFECTIVE, EASY-TO-BUILD, EASY-TO-CLEAN MODULAR ENCLOSURE

Simplex's SIS 797 Enclosure is an ideal solution for USP <797> and USP <800> applications, such as pharmaceutical compounding, medical device manufacturing, assembly and sterile packaging. Engineered with easy-to-clean internal features, this enclosure's frame boasts Active Channel Technology (ACT) which creates a near flush surface between the frame and panel inserts. This technology eliminates hidden spaces where contaminants can hide and cause problems inside a clean environment.



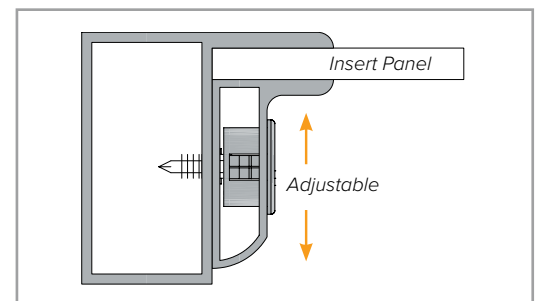
FEATURES:

- » Designed to meet the requirements of USP <797> and USP <800>
- » Interior construction designed for easy cleaning
- » Suitable for ISO 8 (Class 100,000) to ISO 4 (Class 10) cleanroom applications
- » Available as single-pass, re-circulating design with air-chase walls and ceiling plenum or as a hardwall partition for existing sterile environments
- » Available with integrated self-supporting ceiling modules, factory-assembled for fast and simple construction
- » 2" x 2" extrusion comes in a clear anodized aluminum or powder coated finish
- » Insert panels available in ABS, acrylic, polycarbonate, aluminum or glass
- » ACT frame can accommodate insert panels from 1/8" to 3/8"
- » Ships as an easy-to-build pre-assembled turnkey room



BENEFITS:

- » Promotes better quality and better yields
- » Helps achieve USP <797> and USP <800> regulatory compliance
- » Assembly hardware is accessed from the exterior and sealed, for a professional, high-tech look
- » Flush surface from insert to extrusion allows for a cleaner working environment
- » Engineered to be modular—easily expands as needs change



ACT is an adjustable, two-piece extrusion capable of accommodating panel insert thicknesses from 1/8" to 3/8"



The ACT design creates a snug interior mounting of the insert panels, keeping them flush with the frame. This makes the assembled interior walls easy to keep clean.



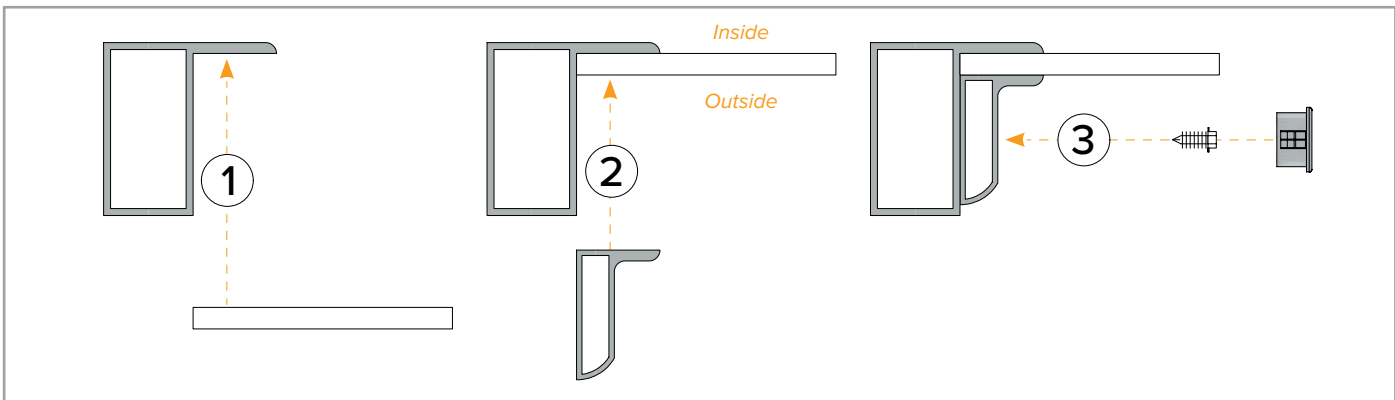
All assembly hardware is accessed from the exterior of the assembled cleanroom. The hardware is sealed with caps to provide a clean, professional look.



The SIS 797 can be ordered with the Simplex integrated ceiling system that accepts standard 2' x 4' components. Options include ceiling tiles, HEPA filters and various types of 2' x 4' lighting units.

ACTIVE CHANNEL TECHNOLOGY

While panels come pre-assembled, the below diagram demonstrates how Simplex's Active Channel Technology is able to accommodate insert thicknesses from 1/8" to 3/8".



CONNECTIONS

The SIS 797 Enclosure is designed to provide a flush surface from insert to extrusion, even at critical points such as ceiling posts, wall-to-wall connections and wall-to-wall corner connections.

